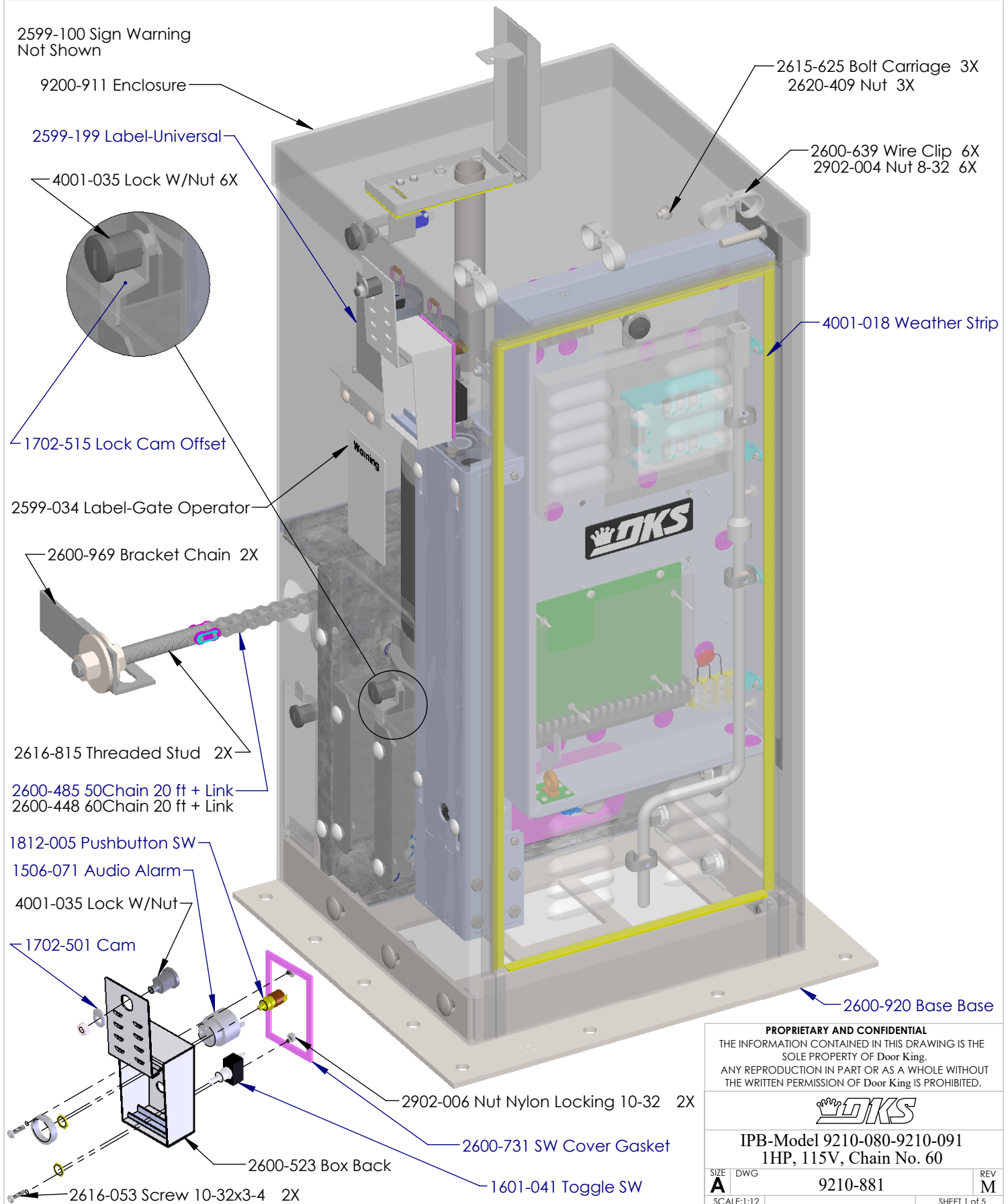



REVISIONS

REV	DESCRIPTION	DRW	APPR
J	G Change 2600-245 to 2600-259 limit Nut 06/30/10, H Change 2600-246 to 2600-254 limit Nut Assy. 07/14/10, I Add 2601-101 Keyway to BOM 09/09/10, J Change Housing 9200-905 to 9200-910, Add (2) 2601-282 Plugs 07/22/11	3/21/14	DC
K	Change 9200-910 to 9200-911, Remove 2600-919 -918 -923 -924 Idler Panels, Add 9210-180 & 9210-185, Remove 2600-971 -972 Gear Box Mtg Bkts, Add 9210-171 -172 & -173, Add (2) Locks 4001-035 & Cam 1702-515	3/23/15	DC
L	Removed all Limif Box parts Add 9200-021 Assy 2/25/16 DC	3/7/16	DC
M	2601-266 Gearbox was 2600-348, 2600-327 Sprocket 19 Tooth was 2600-317 Sprocket 25 Tooth, 2600-380 Sprocket 16 Tooth 60 Chain was 2600-355 Sprocket 21 Tooth, 2600-375 Sprocket 20 Tooth 50 Chain was 2600-395 Sprocket 25 Tooth	1/5/2021	DC

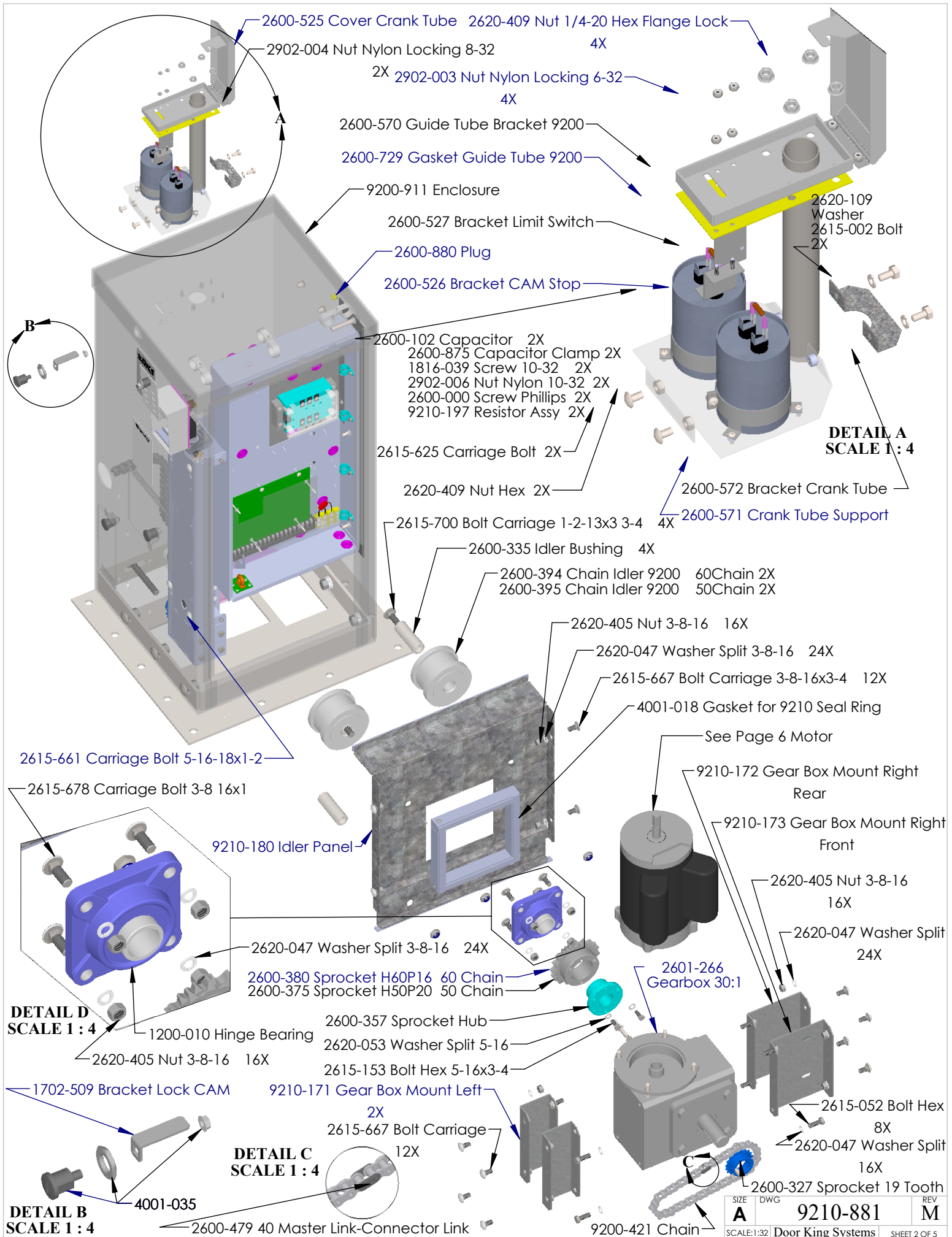


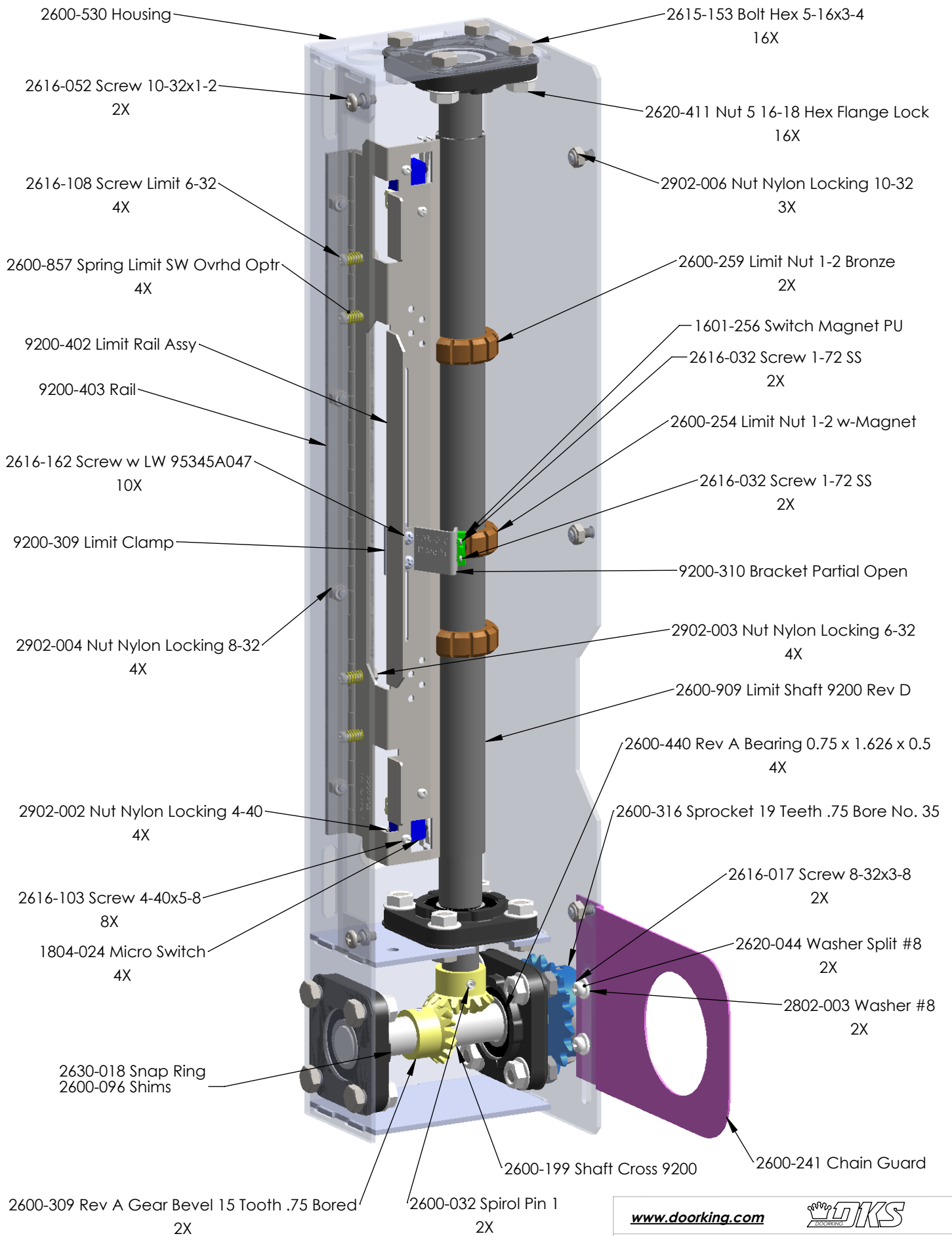
PROPRIETARY AND CONFIDENTIAL
 THE INFORMATION CONTAINED IN THIS DRAWING IS THE
 SOLE PROPERTY OF Door King.
 ANY REPRODUCTION IN PART OR AS A WHOLE WITHOUT
 THE WRITTEN PERMISSION OF Door King IS PROHIBITED.



IPB-Model 9210-080-9210-091
1HP, 115V, Chain No. 60

SIZE A	DWG 9210-881	REV M
SCALE:1:12	SHEET 1 of 5	





**9200-005 Clear Cover
not shown for clarity**

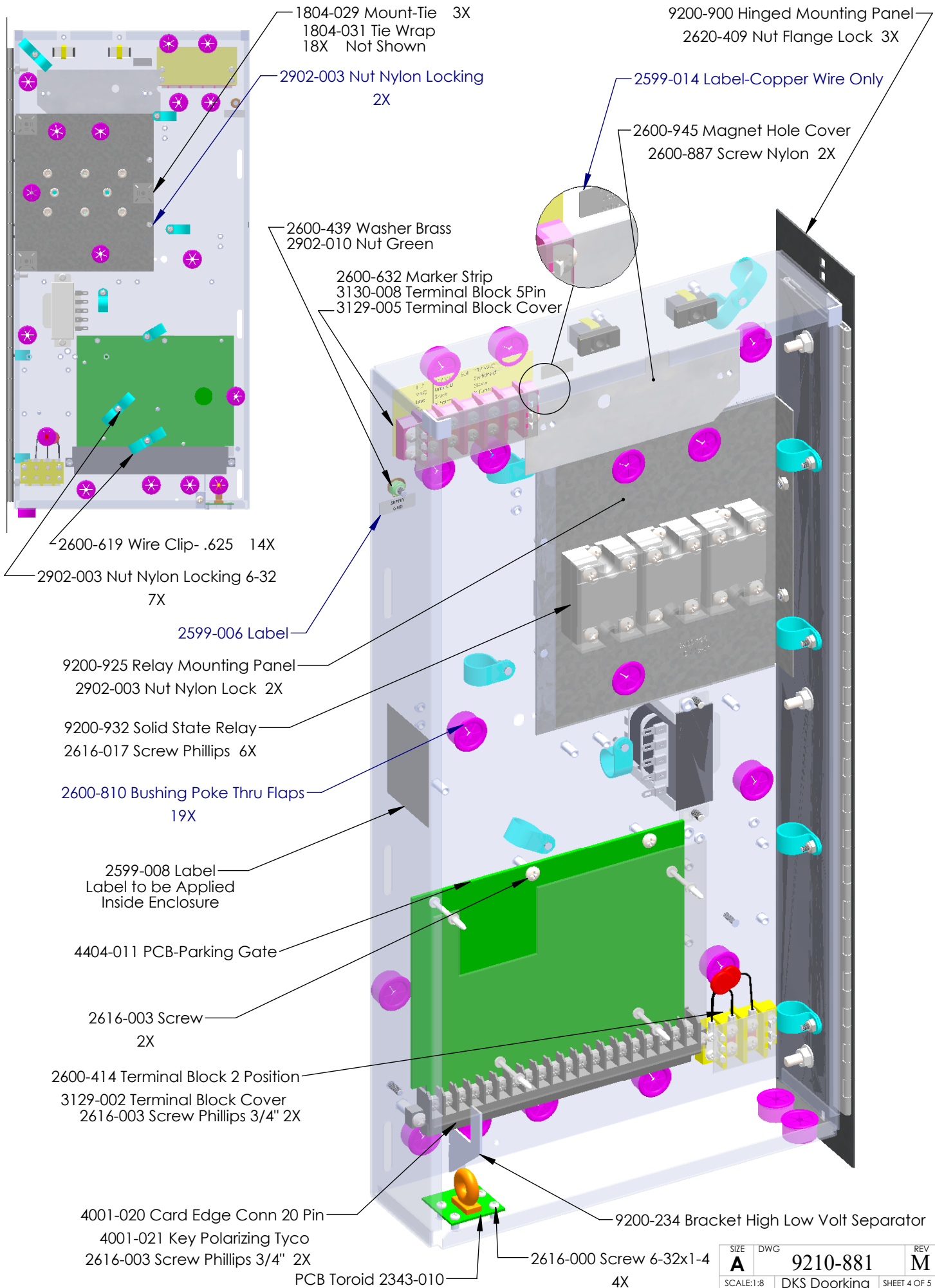
PROPRIETARY AND CONFIDENTIAL
THE INFORMATION CONTAINED IN THIS DRAWING IS THE SOLE PROPERTY OF DOOR KING. ANY REPRODUCTION IN PART OR AS A WHOLE WITHOUT THE WRITTEN PERMISSION OF DOOR KING IS PROHIBITED.

www.doorking.com



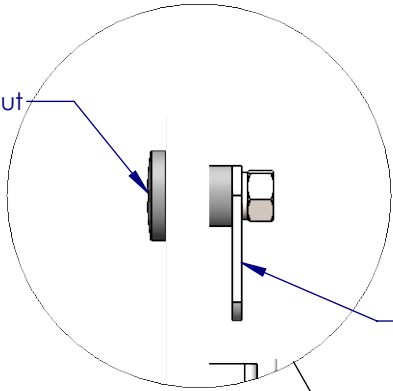
IPB-Limit Switch Enclosure 1/2" Nut

SIZE	DWG. NO.	REV.
A	9200-021	M
Scale: None		SHEET 3 OF 6

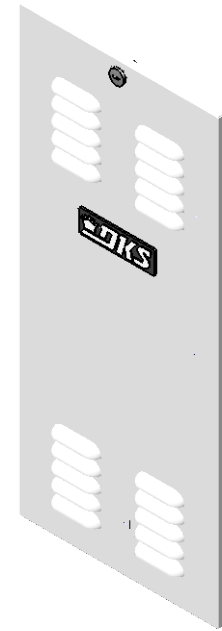


SIZE	DWG	REV
A	9210-881	M
SCALE:1:8	DKS Doorking	SHEET 4 OF 5

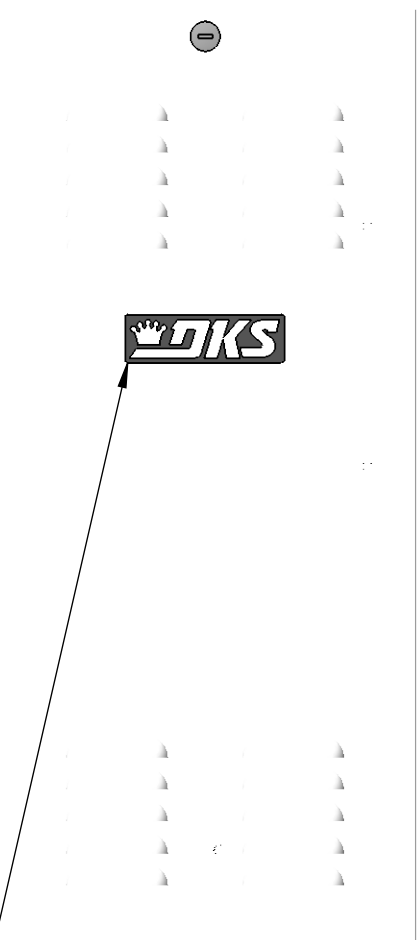
4001-035 Lock w/Nut



1702-503 Cam 1.25

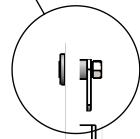


9240-927 Door Enclo Stainless

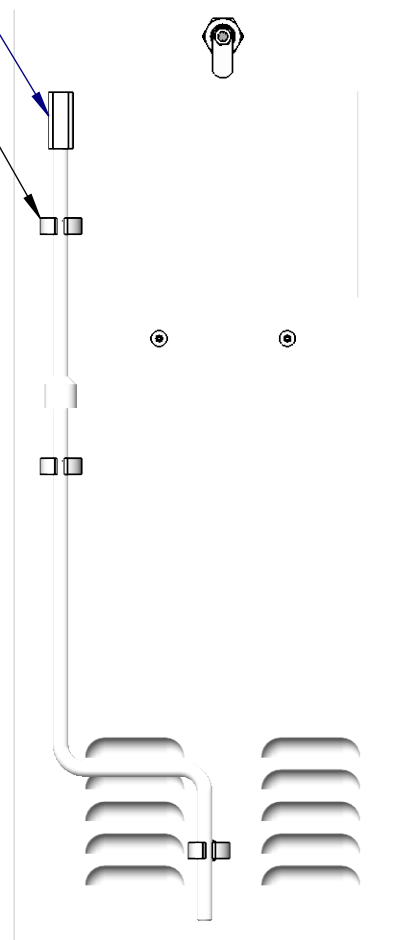


2600-732 Logo plate
1897-052 Gasket 2X
2802-040 Washer Push On 2X

2600-214 Spring Clip 3X
2902-003 Nut 3X



2600-193 Crank Square Tube



Model	Description	Motor	Capacitor	Marker Strip	Wire Set	Transformer	Solid State Relay
9210-080	1HP 115V 1Phase 50 Chain	2600-278	2600-102	2600-431	9210-143	Not used	9200-932 Qty 3
9210-081	1HP 115V 1Phase 60 Chain	2600-278	2600-102	2600-431	9210-143	Not used	9200-932 Qty 3
9210-082	1HP 208V 1Phase 50 Chain	2600-280	2600-234	2600-434	9210-143	4001-087	9200-932 Qty 3
9210-083	1HP 208V 1Phase 60 Chain	2600-280	2600-234	2600-434	9210-143	4001-087	9200-932 Qty 3
9210-084	1HP 230V 1Phase 50 Chain	2600-280	2600-234	2600-469	9210-143	4001-087	9200-932 Qty 3
9210-085	1HP 230V 1Phase 60 Chain	2600-280	2600-234	2600-469	9210-143	4001-087	9200-932 Qty 3
9210-086	1HP 208V 3Phase 50 Chain	2600-295	Not used	2600-434	9210-145	4001-087	9200-933
9210-087	1HP 208V 3Phase 60 Chain	2600-295	Not used	2600-434	9210-145	4001-087	9200-933
9210-088	1HP 230V 3Phase 50 Chain	2600-295	Not used	2600-472	9210-145	4001-087	9200-933
9210-089	1HP 230V 3Phase 60 Chain	2600-295	Not used	2600-472	9210-145	4001-087	9200-933
9210-090	1HP 460V 3Phase 50 Chain	2600-295	Not used	2600-473	9210-145	4001-087	9200-933
9210-091	1HP 460V 3Phase 60 Chain	2600-295	Not used	2600-473	9210-145	4001-087	9200-933