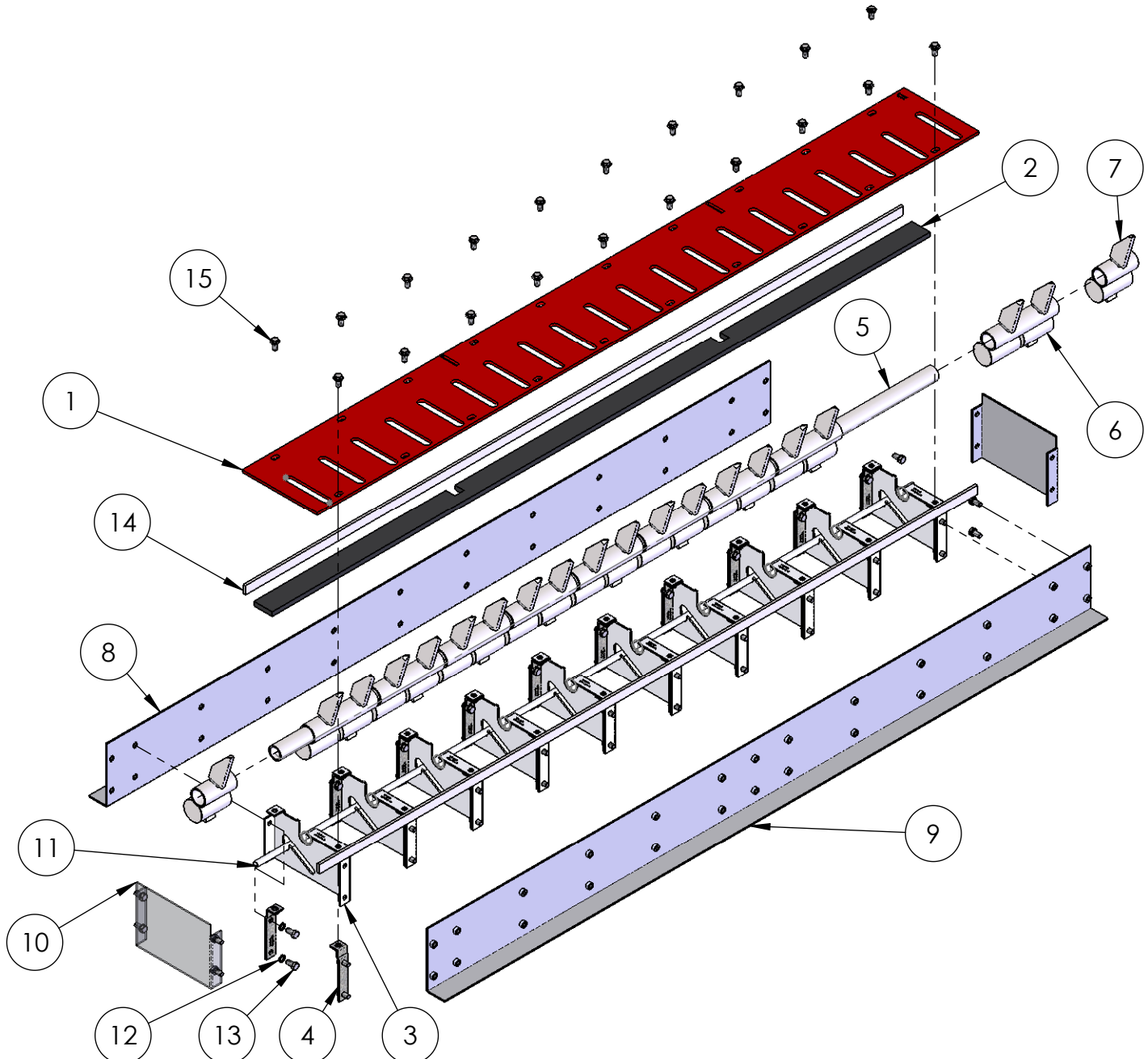


REVISIONS


ZONE	REV.	DESCRIPTION	DATE	APPROVED
	A	New Drawing	3/12/2015	DC



ITEM	PART #	DESCRIPTION	QTY.
1	1610-115	1/4" Top Plate HD	1
2	1610-015	Rubber strip	1
3	1610-054	Panel Inner	10
4	1610-056	Bracket Support w/Nut	20
5	1610-032	Spike Tube	1
6	1610-155	Dual Weighted Spike w LD tab	9
7	1610-035	Weighted Spike w LD tab Rev C	2
8	1610-105	Tirespike Right Side Panel	1
9	1610-106	Tirespike Left Side Panel	1
10	1610-051	Tirespike End Panel	2
11	1610-044	Rod Steel 1-2in x 72	1
12	2620-047	Washer Split 3-8-16	48
13	2615-128	Bolt Hex 3-8-16x3-4	48
14	1610-119	Support Rail for HD Unit	2
15	2615-262	SS Bolt Hex Flange Lock 3/8-16 x 3/4"	20

1. Notes: Unless Otherwise Specified.

PROPRIETARY AND CONFIDENTIAL
 THE INFORMATION CONTAINED IN THIS DRAWING IS THE SOLE PROPERTY OF DOORKING. ANY REPRODUCTION IN PART OR AS A WHOLE WITHOUT THE WRITTEN PERMISSION OF DOORKING IS PROHIBITED.

www.doorking.com 

IPB-HD Flush Traffic Spike w/Lockdown

SIZE **A** DWG. NO. **1610-093** REV. **A**

Scale: None SHEET 1 OF 1