

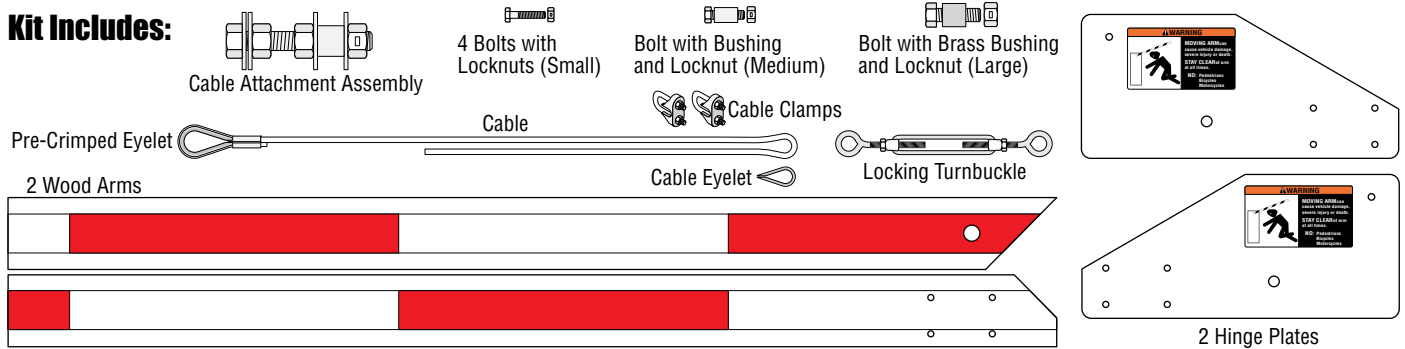
WOOD FOLDING ARM KIT

DoorKing Part Number

1601-384

This kit is designed for the 1600 model barrier gate operators only. Recommended for low headroom applications.

Kit Includes:



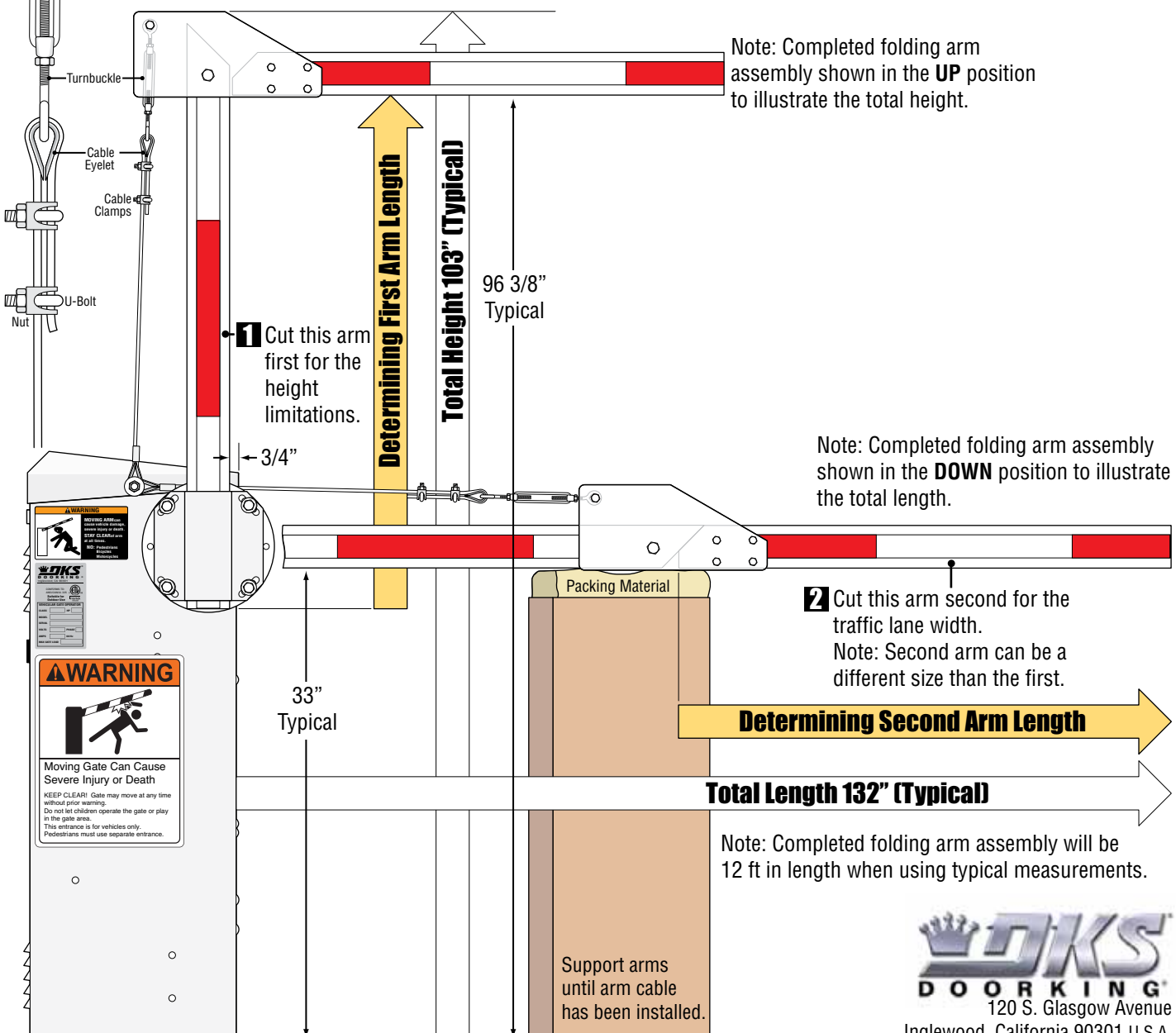
Layout

Cut Arms to Length

IMPORTANT: Cable **MUST** be clamped as shown.

Note: Completed folding arm assembly shown in the **UP** position to illustrate the total height.

Note: Completed folding arm assembly shown in the **DOWN** position to illustrate the total length.

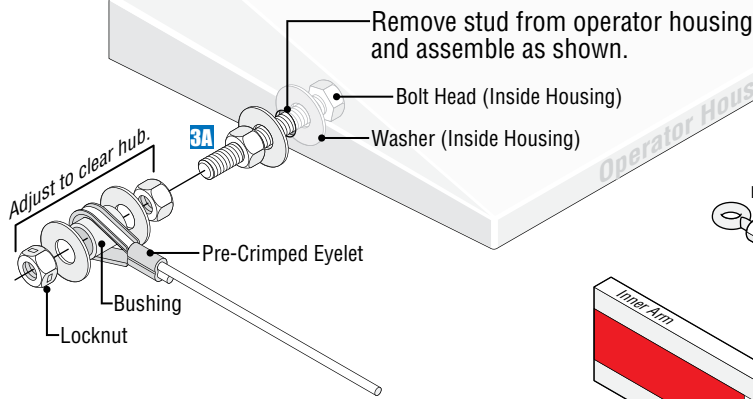


Installing Arms

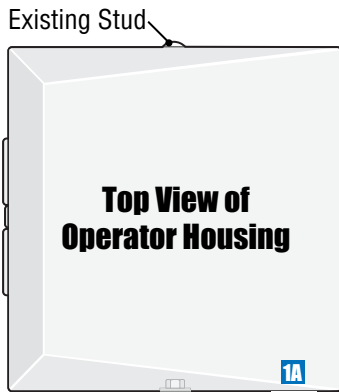
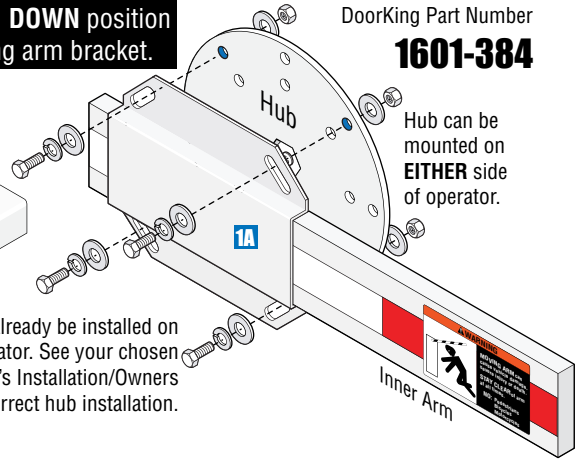
Test hub UP and DOWN position before installing arm bracket.

DoorKing Part Number
1601-384

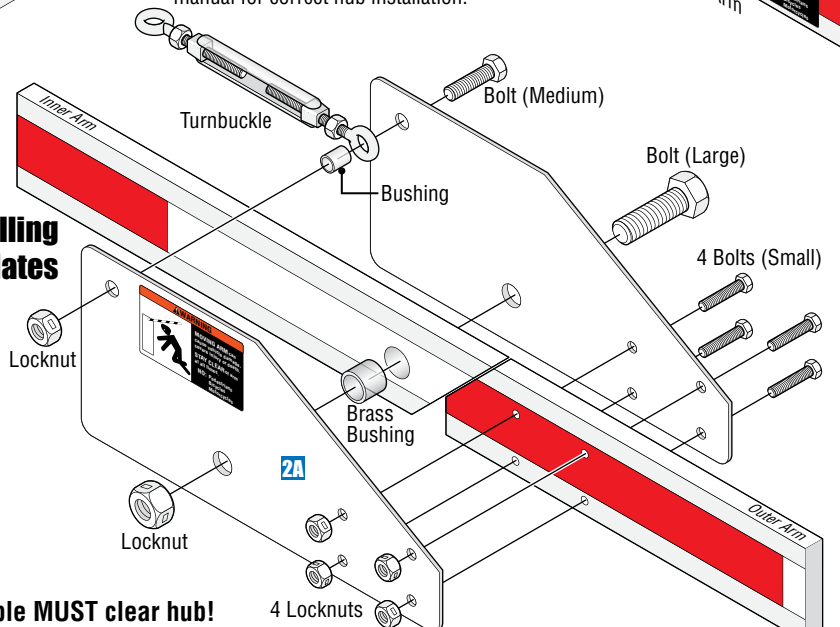
Installing Cable Attachment Assembly



Hub **MUST** already be installed on operator. See your chosen operator's Installation/Owners manual for correct hub installation.



Installing Hinge Plates



3 Install cable. Cable **MUST** clear hub!

1 Install inner arm on hub.

2 Install hinge plates.

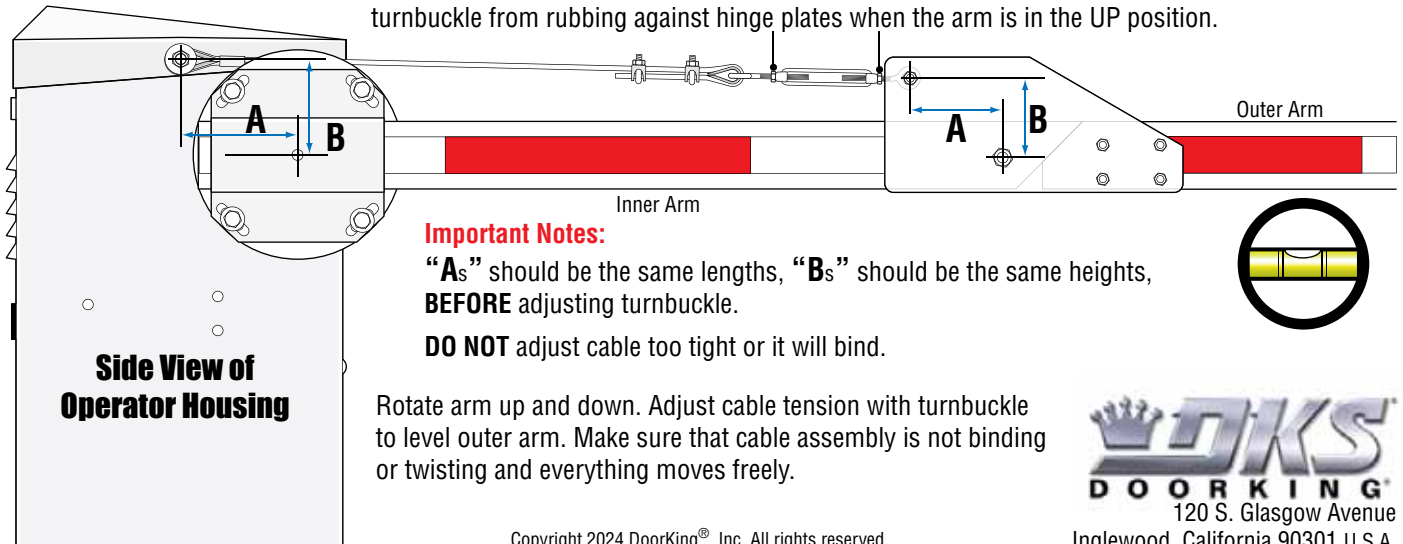
Cable Clamps

Cable Eyelet **MUST** be installed in turnbuckle.

Allow turnbuckle to loosen or tighten.

Adjusting and Locking Cable Assembly

After adjusting cable tension, lock turnbuckle with nuts in position shown to prevent turnbuckle from rubbing against hinge plates when the arm is in the UP position.



Important Notes:

“A_s” should be the same lengths, “B_s” should be the same heights, **BEFORE** adjusting turnbuckle.

DO NOT adjust cable too tight or it will bind.

Rotate arm up and down. Adjust cable tension with turnbuckle to level outer arm. Make sure that cable assembly is not binding or twisting and everything moves freely.

