

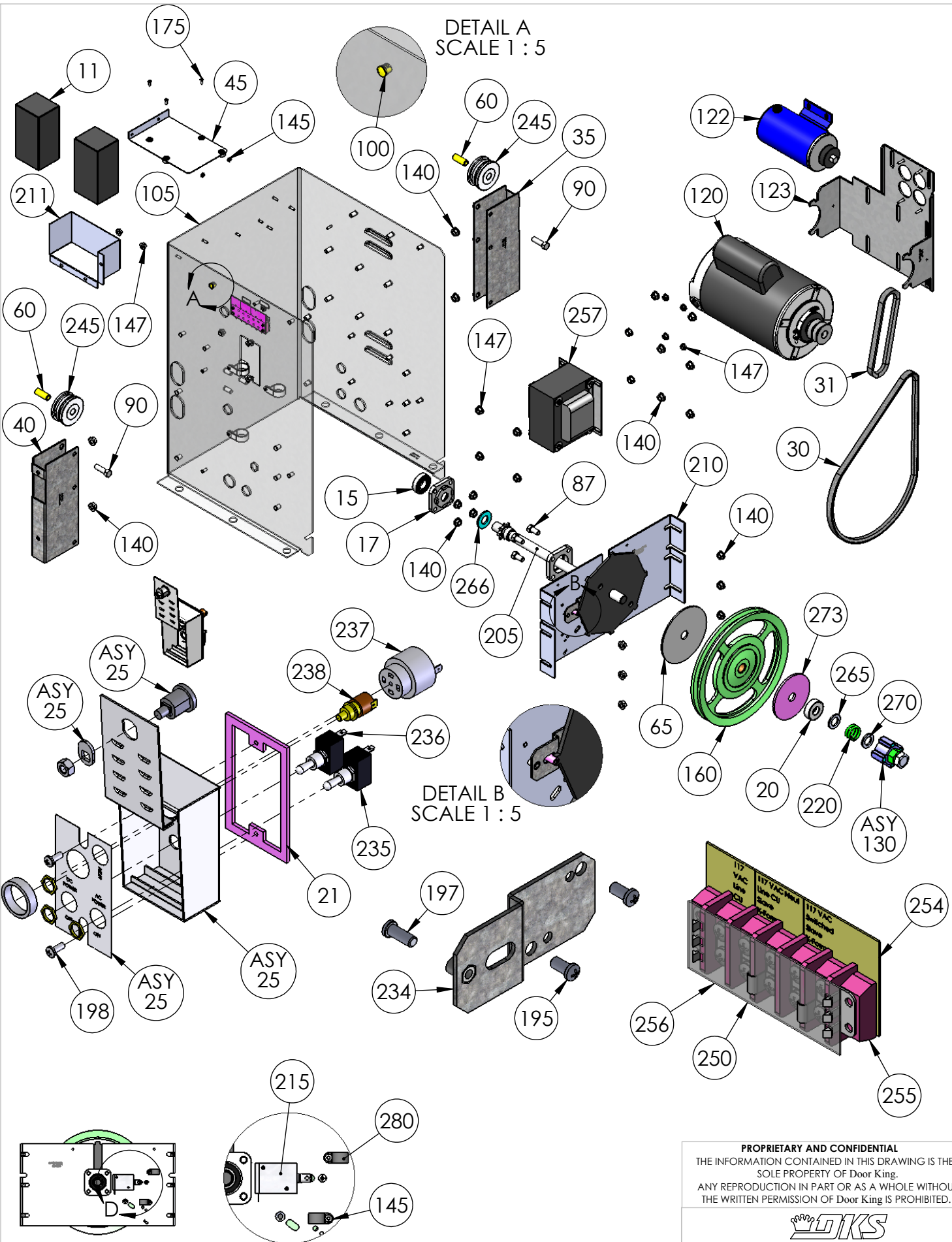
DETAIL A  
SCALE 1:2

**PROPRIETARY AND CONFIDENTIAL**  
THE INFORMATION CONTAINED IN THIS DRAWING IS THE  
SOLE PROPERTY OF Door King.  
ANY REPRODUCTION IN PART OR AS A WHOLE WITHOUT  
THE WRITTEN PERMISSION OF Door King IS PROHIBITED.



Model 9150-083  
1Hp 230 Volt Bat Backup

SIZE <b>A</b>	DWG	9150-883	REV <b>K</b>
SCALE: 1:12			SHEET 1 of 3

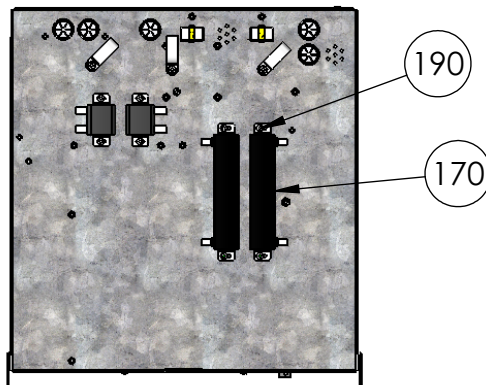
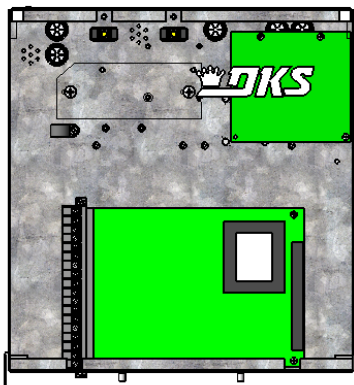
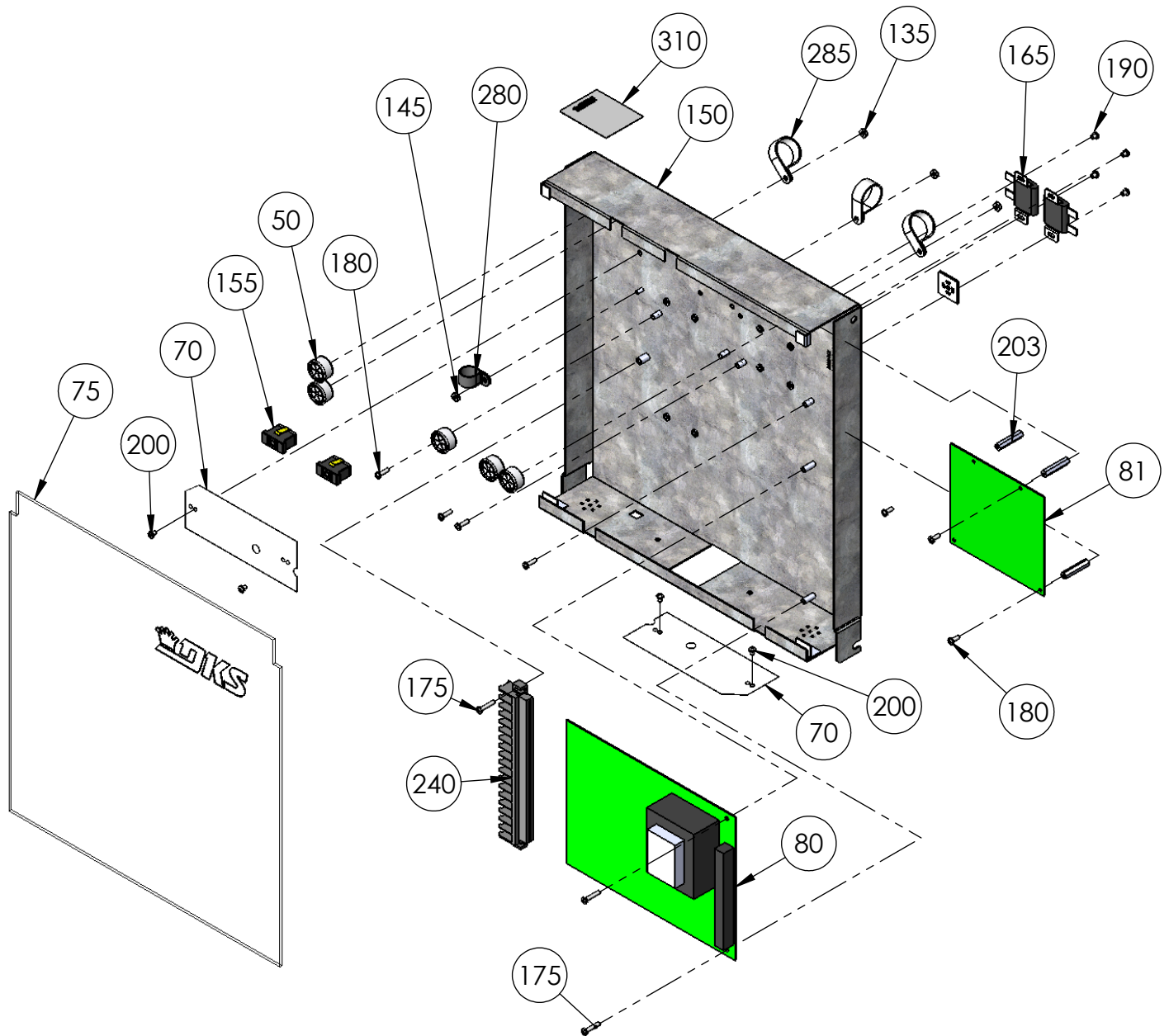


**PROPRIETARY AND CONFIDENTIAL**  
 THE INFORMATION CONTAINED IN THIS DRAWING IS THE  
 SOLE PROPERTY OF Door King.  
 ANY REPRODUCTION IN PART OR AS A WHOLE WITHOUT  
 THE WRITTEN PERMISSION OF Door King IS PROHIBITED.



**Model 9150-083**  
**1Hp 230volt Batt. Backup**

SIZE <b>A</b>	DWG 9150-883	REV <b>K</b>
SCALE: 1:48		SHEET 2 of 3



**PROPRIETARY AND CONFIDENTIAL**  
 THE INFORMATION CONTAINED IN THIS DRAWING IS THE  
 SOLE PROPERTY OF Door King.  
 ANY REPRODUCTION IN PART OR AS A WHOLE WITHOUT  
 THE WRITTEN PERMISSION OF Door King IS PROHIBITED.



**Model 9150-083**  
**1Hp 230Volt Batt. Backup**

SIZE **A** DWG

**9150-883**

REV **K**

SCALE: 1:24

SHEET 3 of 3

9150-082	part #	Qt	Description
	5 9150-066	1	Manual Installation
	7 1897-052	2	Gasket, Microphone Support
	8 2802-040	2	Washer Push on Clamp
	9 2600-732	1	Nameplate Plastic DKS Big
	10 2600-852	1	Accessory Box 9150 Operator
	15 2600-440	1	Bearing Used in Slide Oper
	20 2600-453	1	Bearing Holder Plastic Back
	25 2600-053	1	Bearing - Thrust 3/4 ID
	30 2600-731	1	Gasket Switch Cover
	35 2600-533	1	Switch Cover Doorlocking Lockable
	40 2600-694	1	Belt - AX36
	45 2600-965	1	Bracket Idler Left 9150
	50 2600-966	1	Bracket Idler Right 9150
	55 2600-938	1	Radio Tray 910
	60 2600-810	5	Bushing 7/8 Poke Thru Flaps
	70 2600-871	2	Bushing 1/2"ODx5/16"IDx1 5/16L
	75 2801-004	1	Clutch Pad 5" OD - 3/4" ID
	80 2600-945	2	Cover Plastic Insulator
	85 9150-006	1	Cover Plastic Model 9150
	90 4602-010	1	PCB Slide Gate Operator
	95 2615-153	4	Bolt Hex Head 5/16-18 x 3/4
	100 2615-155	2	Bolt Hex Head 5/16-18 x 1 3/4
	105 2600-932	1	Door Model 9150
	110 2600-880	1	Hole Plug Plastic for 3/8 Hole
	115 2600-984	1	Housing-Model 9150
	120 4001-035	1	Lock N16058BDxSFx2K Key 16120
	125 1702-503	1	Cam 1.1/4
	135 2600-162	1	Motor Assy 1HP Model 6300-9150
	145 2600-917	1	Jam Nut Magnet Subassy 910/915
	150 2902-006	3	Nut Nylon Lock 10-32
	155 2620-411	18	Nut Hex Flange Lock 5/16-18
	160 2902-003	20	Nut Nylon Lock 6-32
	165 2620-409	12	Nut Hex Flange Lock 1/4-20
	170 2600-962	1	Mount Plate PC Board Mod 9150
	175 1200-028	2	Outlet Snap-In Leviton 1306
	180 2600-957	1	Pulley 10 inch Aluminum Assy
	185 2600-848	2	Resistor Power 1 ohm 30 Watt
	190 2600-847	2	Resistor Power 1 ohm 65 watt
	195 2616-006	8	Screw Phillips Head 6-32x3/16
	200 2616-002	8	Screw Phillips Head 6-32 x 1/2
	205 2616-007	3	Screw Phillips Head 6-32x5/8"
	210 2616-000	8	Screw Phillips Head 6-32 x 1/4
	213 2616-001	3	Screw Phillips Head 6-32 x 3/8
	215 2616-007	2	Screw Phillips Head 6-32x5/8"
	225 2616-051	2	Screw Phillips 10-32x3/8
	230 2616-052	1	Screw Phillips Head 10-32 x1/2
	235 2600-887	4	Screw Nylon Phillips 6-32x1/4"
	240 2600-904	1	Main Shaft Assembly
	245 2600-931	1	Bracket Shaft Support 915
	250 2600-860	1	Solenoid Lock Assy 91XX



255 2600-446	1 Spring-Compression
275 2600-487	1 Bracket Solenoid Support
279 1812-005	1 Switch Push Button N.O.
280 1601-140	1 Switch Toggle 2 Pole On-Off
281 1506-071	1 Tone Generator Loud
282 4001-096	1 Transformer 460/230/208-115V
285 2901-002	1 Terminal 18 Pin
290 2600-886	2 Idler Wheel UHMW
294 2600-469	1 Marker Strip 230V 1Phase
295 3130-008	1 Terminal Block 5 pin
296 2600-840	2 Jumper- Ring Tongue #8 Screw
297 3129-005	1 Terminal Block Cover 5 Positio
300 2600-439	1 Washer Cup - Brass
305 2600-344	1 Washer 1 1/8"OD x 3/4"ID
310 2600-990	1 Washer Neoprene 1.5"x.725"x125
315 2600-345	1 Washer Hardened 1 1/4 x 3/4 ID
320 2620-035	1 Washer 4"ODx3/4"ID
325 2620-053	2 Lockwasher 5/16"
330 2600-619	9 Wire Clp-5/8" Concord 770-1209
335 2600-639	6 Wire Clamp-1"
340 2600-987	1 Wire Set 9150 Operator 1HP
341 7082-135	1 Wire 9" Red Stranded 14AWG
342 7082-136	1 Wire 9" Blue Stranded 14AWG
343 7082-137	1 Wire 5" Green Stranded 14AWG
344 7082-052	1 Wire 8" Green 16 AWG Stranded
345 1804-031	20 Tie Wrap 4"
350 2600-749	2 Wire Connector STA-KON RC6
355 4001-018	7 Weather Stripping 50' rolls
365 2599-008	1 Label Patent
370 2599-006	1 Decal SUPPLY GND
375 2599-014	1 Decal Copper Wire Only
380 2599-034	1 Label Gate Operator
390 2599-199	1 Label Universal
405 2599-100	2 Sign Warning