

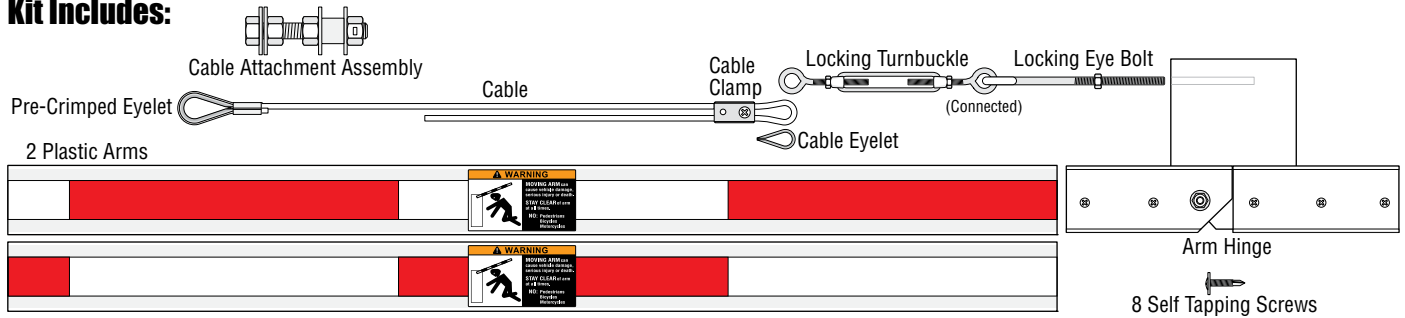
PLASTIC FOLDING ARM KIT

DoorKing Part Number

1601-383

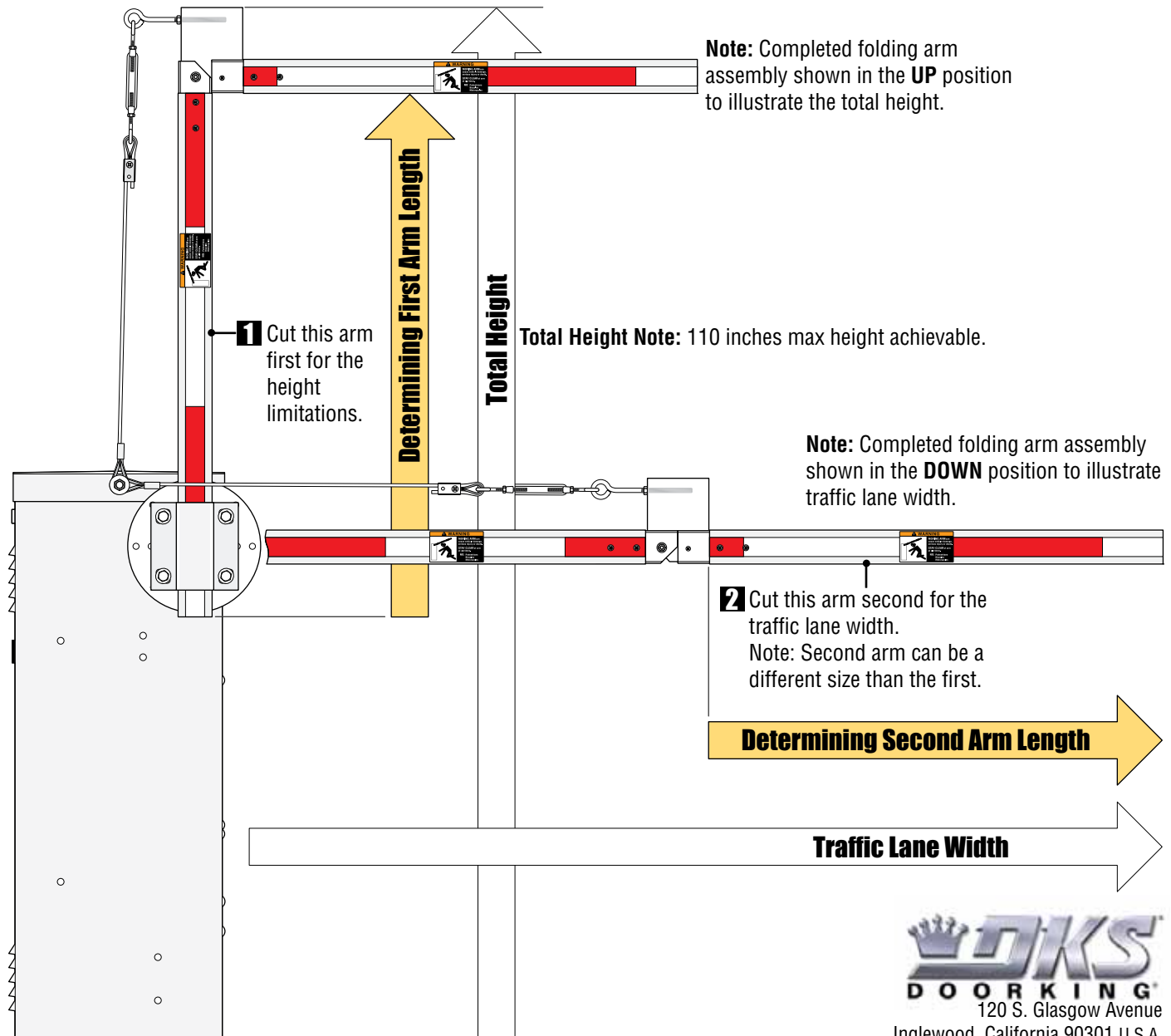
This kit is designed for the 1600 model barrier gate operators only. Recommended for low headroom applications.

Kit Includes:



Installation

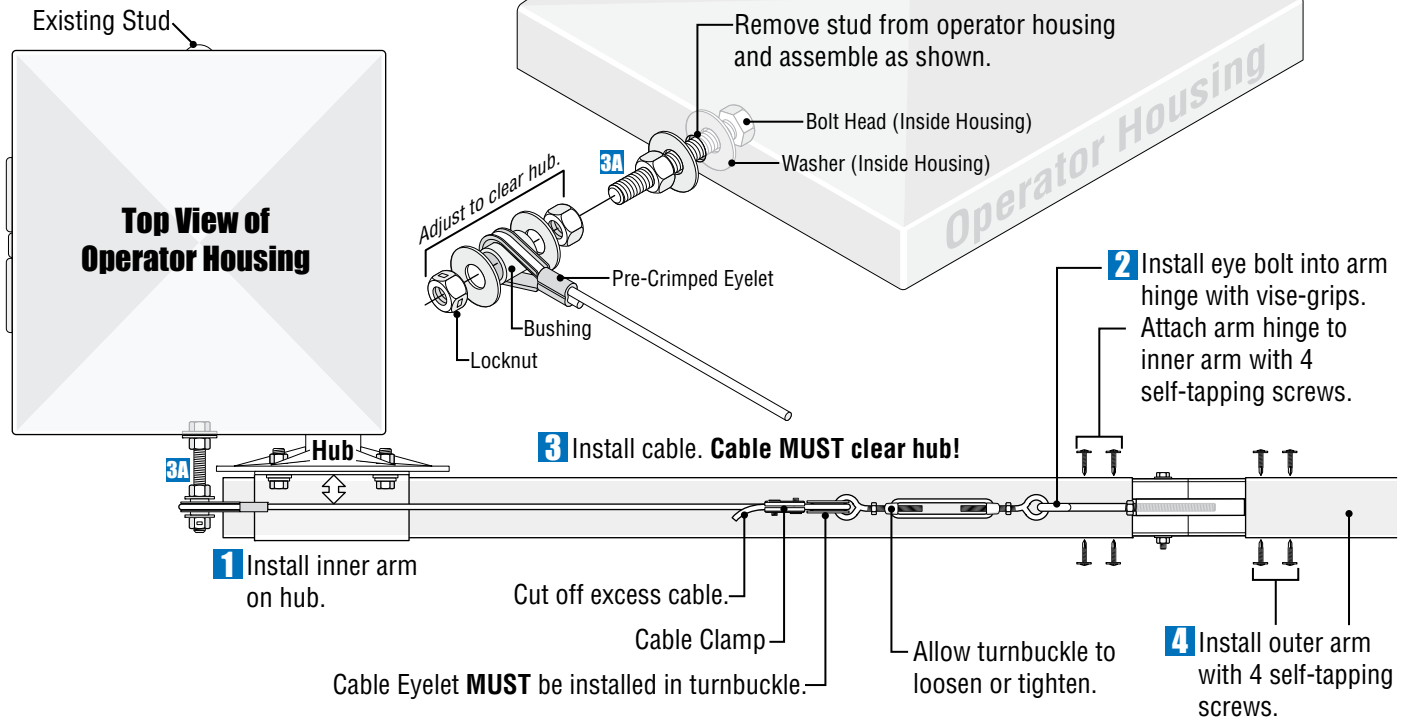
Cut Arms to Length



Installing Arms

DoorKing Part Number

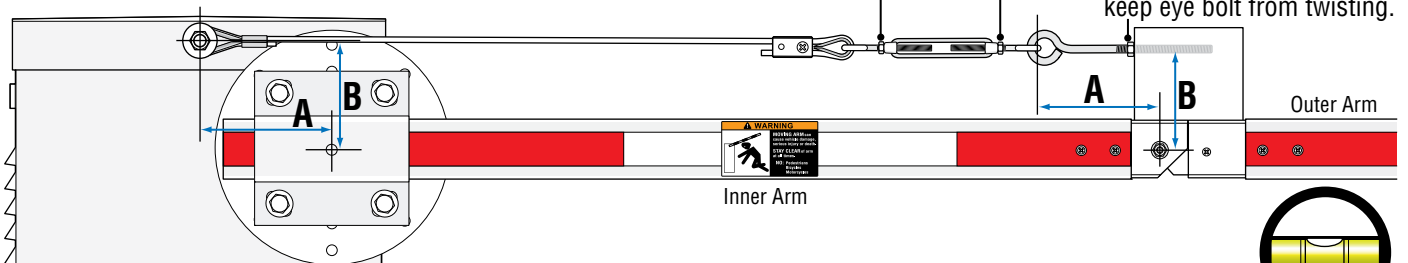
1601-383



Adjusting and Locking Cable Assembly

After adjusting cable tension, lock turnbuckle with nuts to keep turnbuckle from twisting.

Lock eye bolt with nut to keep eye bolt from twisting.



Important Notes:

“A’s” should be the same lengths, “B’s” should be the same heights, **BEFORE** adjusting turnbuckle.

DO NOT adjust cable too tight or it will bind.

Rotate arm up and down. Adjust cable tension with turnbuckle to level outer arm. Make sure that cable assembly is not binding or twisting and everything moves freely.