

---

## 6.3 REMOTE ACCT MGR SOFTWARE WINDOWS VISTA OR WINDOWS 7 INSTALLATION NOTES

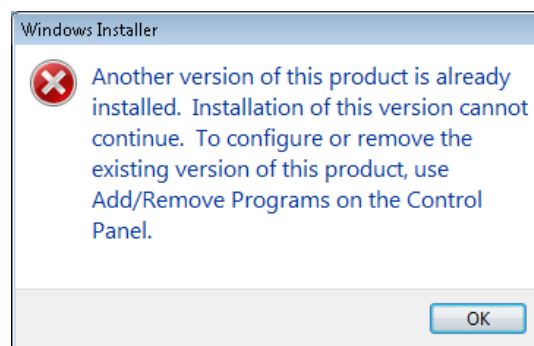
---

DoorKing is releasing a new Remote Account Manager Software, version 6.3, for the 1830 series of Telephone Entry and Access Controllers. When installing this software onto a computer using either Windows Vista or Window 7 Operating Systems, there are some key installation selections that need to be considered.

The following Installation Guide will help you understand the options available.

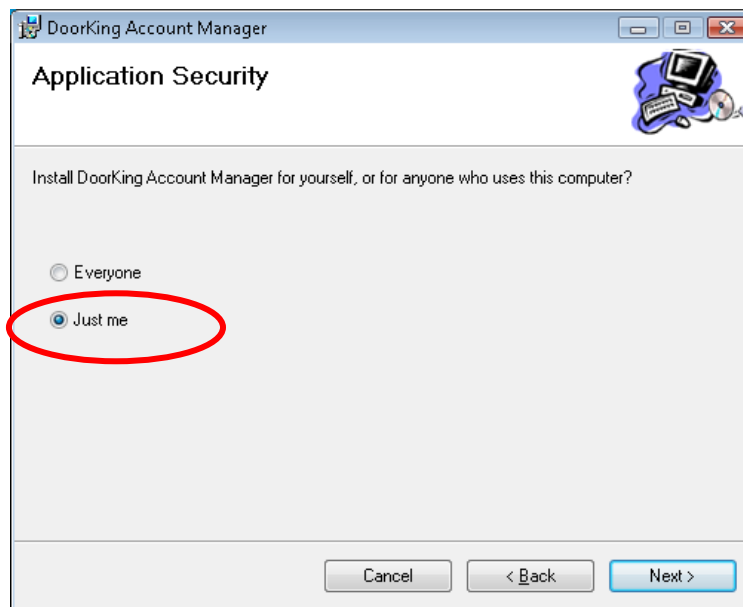
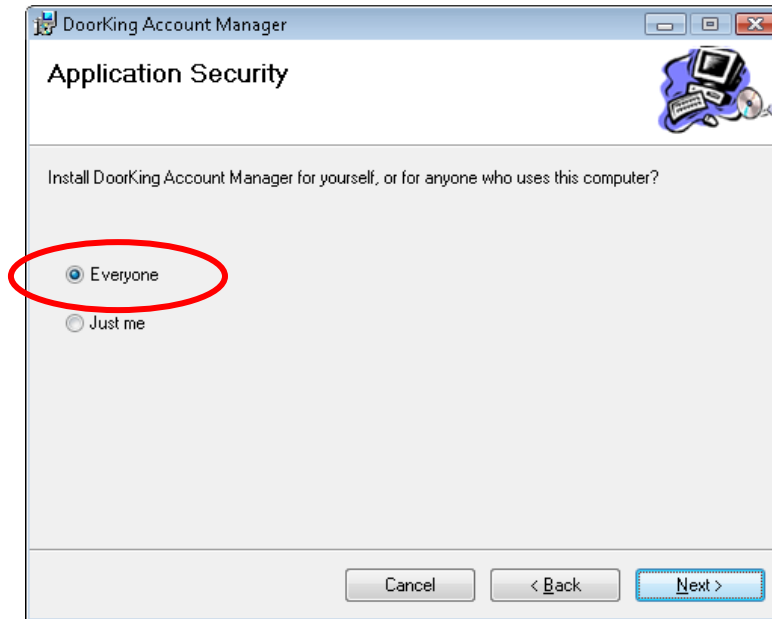


If you are installing onto a Windows Vista or Windows 7 PC, and there is an existing DoorKing software program, versions 6.0 or higher, you will need to Uninstall the previous software. Please use the Windows "Uninstall Program" function to remove the previous DoorKing Software.

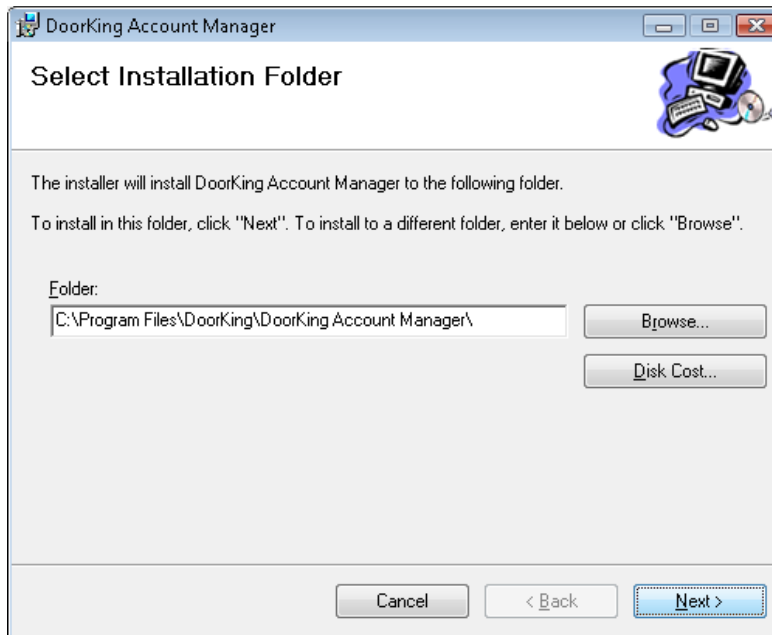


**INSTALLATION OPTIONS** – There are two (2) options available when installing the Software on a Windows Vista or Windows 7 computer:

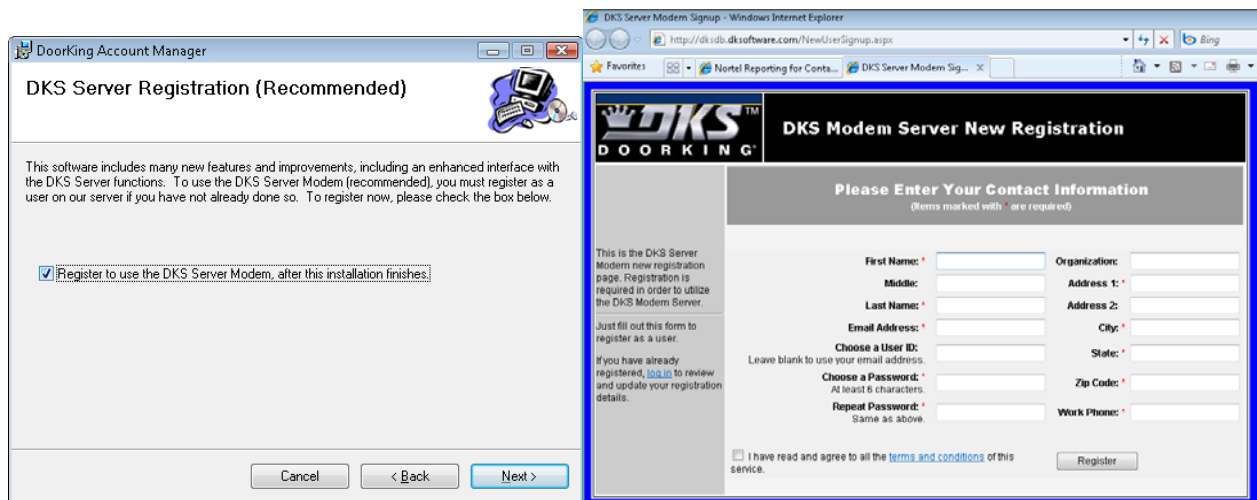
1. **EVERYONE:** This option allows any person logging onto the Computer to have access to the DoorKing Software Program
2. **JUST ME:** This options limits access into the DoorKing Software. Only the person logged onto the computer at the time of installation will have access to the DoorKing program.



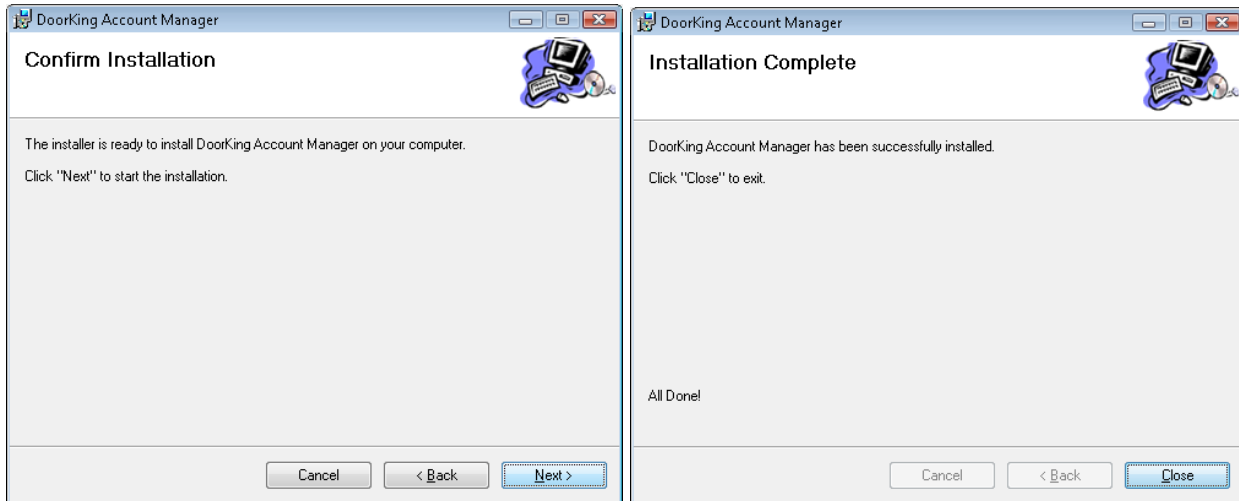
**INSTALLATION LOCATION** – We suggest using the default folder locations for the DoorKing software. However, you may change this if desired.



**DKS SERVER REGISTRATION** – If you plan on utilizing the DKS Server Modem system for connection between the PC and your Entry System, you will need to Register the software on the DKS Server. Registration can be completed during the installation process, or later from the DoorKing Software.

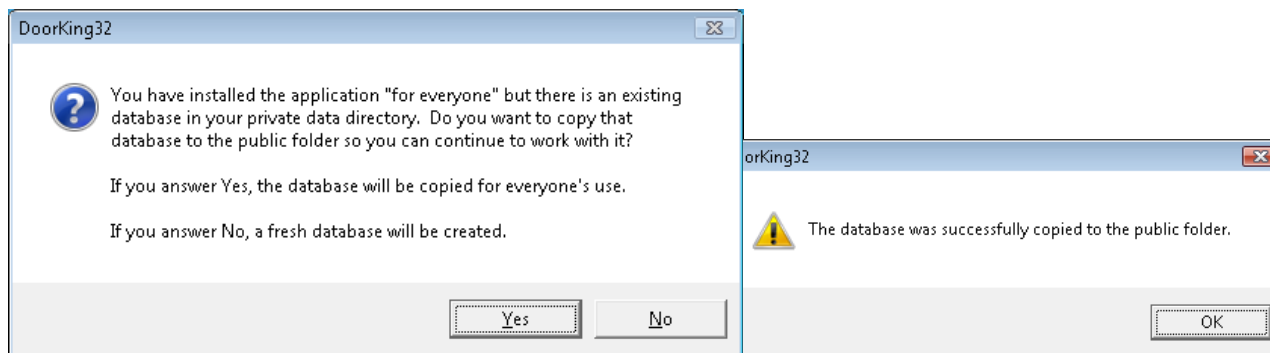


**CONFIRM INSTALLATION** – Now that the options have been selected, you are ready to proceed with the Software installation.



**COPY DATABASE** – If you are “Updating” from a previous Software version, you will be asked to copy the existing database into the new Software. This will take all of the Account Information from the previous software and transfer it to the new 6.3 Software. Account information includes Resident Names, Phone Numbers and Card Access settings.

- YES – The existing Database will be transferred into the new Software installation.
- NO – Existing Data will not be transferred and the new Software will start with a fresh database. No existing Resident Information will be shown in the new software.



Please review these Software Installation notes. Should you have any questions, please contact DoorKing Technical Support.

Sincerely,  
DoorKing