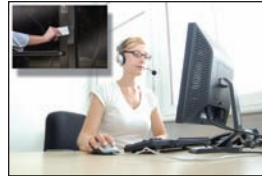
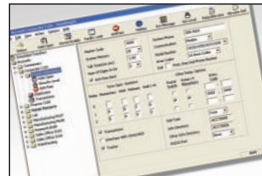


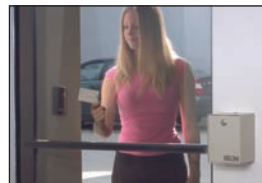
# REMOTE ACCOUNT MANAGER SOFTWARE



**event activity reporting**



**easy to navigate visual interface**



**31 security (permission) levels**



**residential and commercial**

- Manage and program up to 9,999 DKS 1830 series telephone entry and access control systems from your PC
- Program Security Levels (Permission Levels), card, transmitter and PIN (Personal Identification Number) codes
- Hold open time zones, holiday schedule, anti-pass back and elevator control
- View and create transaction analysis reports
- View live transactions
- Easy import and export functions from Microsoft Excel

FEATURES

[www.doorking.com](http://www.doorking.com)

SYMBIO SOFTWARE SOLUTIONS





www.doorking.com

# REMOTE ACCOUNT MANAGER SOFTWARE

DoorKing's Symbio Remote Account Manager software (V6.0) is a powerful flexible and easy to use computer program that allows you to manage access control in a variety of controlled access applications including apartment complexes, gated communities, condominium building's, college resident halls, office buildings, factories, industrial sites, etc. Use this program with the DKS models 1833, 1834, 1835 and 1837 Telephone Entry and Access Control Systems, and with the model 1838 Multi Door Card Access System. Communication to the access system can be established by telephone line (modem), hard wired RS-232 or wireless modem.

## Remote Account Manager Software Features

### Account Management

Administrators have full access to all features of the program. Data Entry users have limited access only. 20 Administrators and 20 Data Entry users can be established.

### Share Information

Up to 9,999 accounts can be created. The Share Info feature allows the user information from one account to be shared with other DKS access control systems.

### Immediate Transfers

Send Data downloads the account information from the computer too the access system.

Receive Data Now uploads the account information from the access control system to the computer.

Receive Transactions Now uploads the event activity buffer from the access control system to the computer.

### Scheduled Transfers

Automated scheduling sends account information and receives event activity transactions automatically.

### Hold Open Time Zones

Up to seven time zones can be created to automatically "hold open" a door or gate at a controlled access point.

### Facility Access Codes

Insures that duplicate codes (card, transmitter, PIN) from one facility will not work at another facility. Up to 10 facility codes can be programmed into the system.

### Device Association

Assigns a label, such as "card", "PIN" or "Transmitter" to a group of access codes for easy identification as to what type of device was used.

### Mass Enable

Turns on a range of access codes in a single programming step.

### Anti-Pass Back

Passive APB mode will record an APB violation but will allow the offending code ingress or egress.

Active APB mode will record an APB violation and will deny the offending code ingress.

Trap APB mode will record an APB violation and will allow the offending code ingress, but will not allow the offending code egress.

### Holiday Schedule

Program up to 32 different holiday schedules. Scheduled hold open time zones can be overridden by the holiday schedule.

### Security (Permission) Levels

There are 31 security (permission) levels, 29 of which are programmable (security level 00 denies access; security level 01 allows access 24/7). Each programmable security level has four programmable time zones.

### Elevator Control

Program which elevator(s) a resident/employee/guest will be allowed to use, and to which floor(s) the resident/employee/guest will be allowed access to. Elevator control requires the optional Elevator Control Board to be connected to the access control system.

### Facility Counter

Indicates how many card holders are in the facility at any time.

### Transaction Reporting / Viewing

Event Transaction File can be viewed on the computer once it is downloaded from the access control system. You can print and create customized reports, or export the report to Microsoft Excel.

Gate Tracker Reports are available when a DKS gate operator is connected to the access control system with the optional Tracker expansion board. View gate operator data such as cycle counts, shut downs, resets, shorted inputs, etc.

### Live Transactions

Transactions can be viewed on the computer as they happen. Live transactions require an RS-232 connection between the computer and the access control system.

### Backup / Restore

Provides a simple method to backup the account and user information to allow restoration or transfer to another computer.

### Import / Export

Import or export the database information in a CSV format.

### Log Files

Log files are time stamped records of all activity performed by the software program.

Distributed by:

## DOOR KING, INC.

120 Glasgow Avenue, Inglewood, California 90301 U.S.A. • Tel: 800-826-7493 • www.doorking.com

© 2008 All Rights Reserved. Product specifications may change without notice. Rev. 1/08

### MEMBER:

